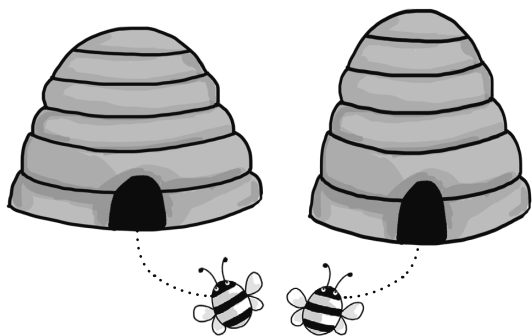
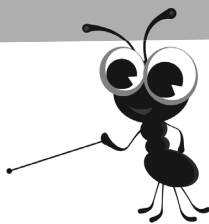


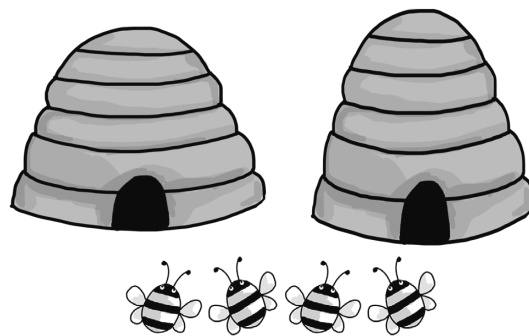
Name: _____ Date: _____

Honeybee halves

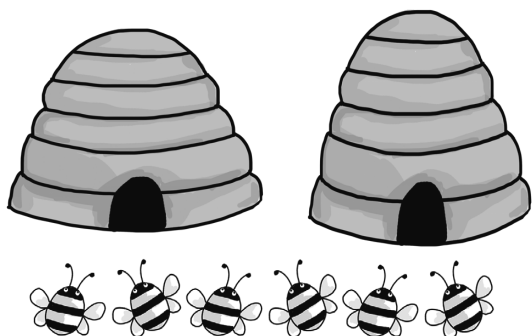
Find half of a set of objects



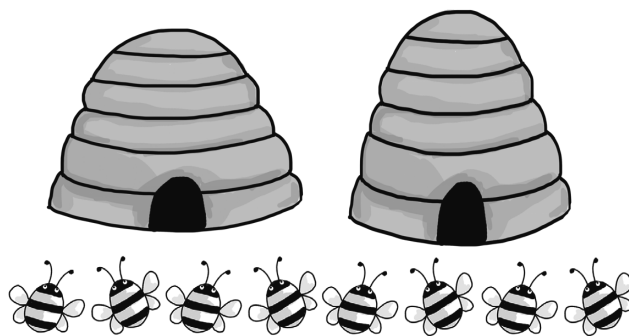
Half of 2 is .



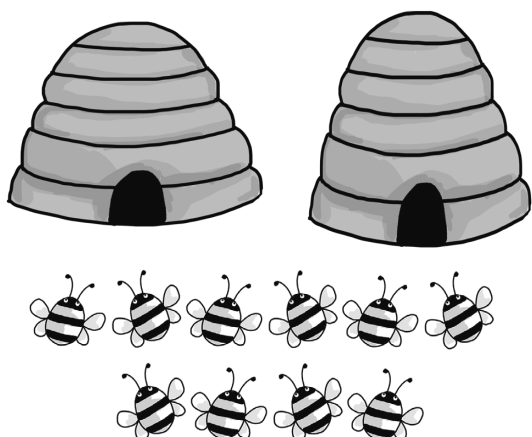
Half of 4 is .



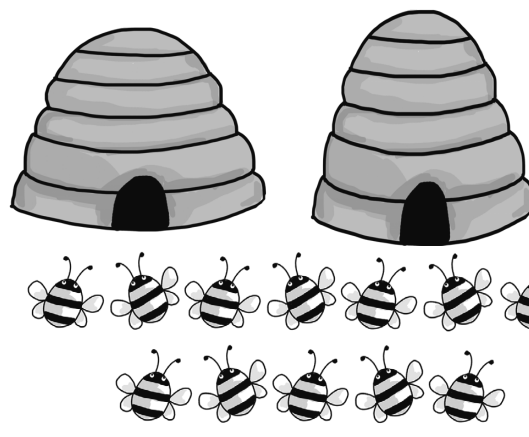
Half of 6 is .



Half of 8 is .



Half of 10 is .



Half of 12 is .

Teacher's notes

Children draw lines to show half of the bees flying to one hive and half to the other. They work out how many bees fly to each hive and complete the sentence.